



GIST Course Builder

The Course Builder takes teachers through each section of the Course Organizer Routine. The builder menu assists teachers with prompts, guidelines and examples of each course section. Once the builder sections are completed, the Course Organizer Template is populated and corresponding Question, Concepts and Unit Organizer Routine Templates are generated, populated and linked.

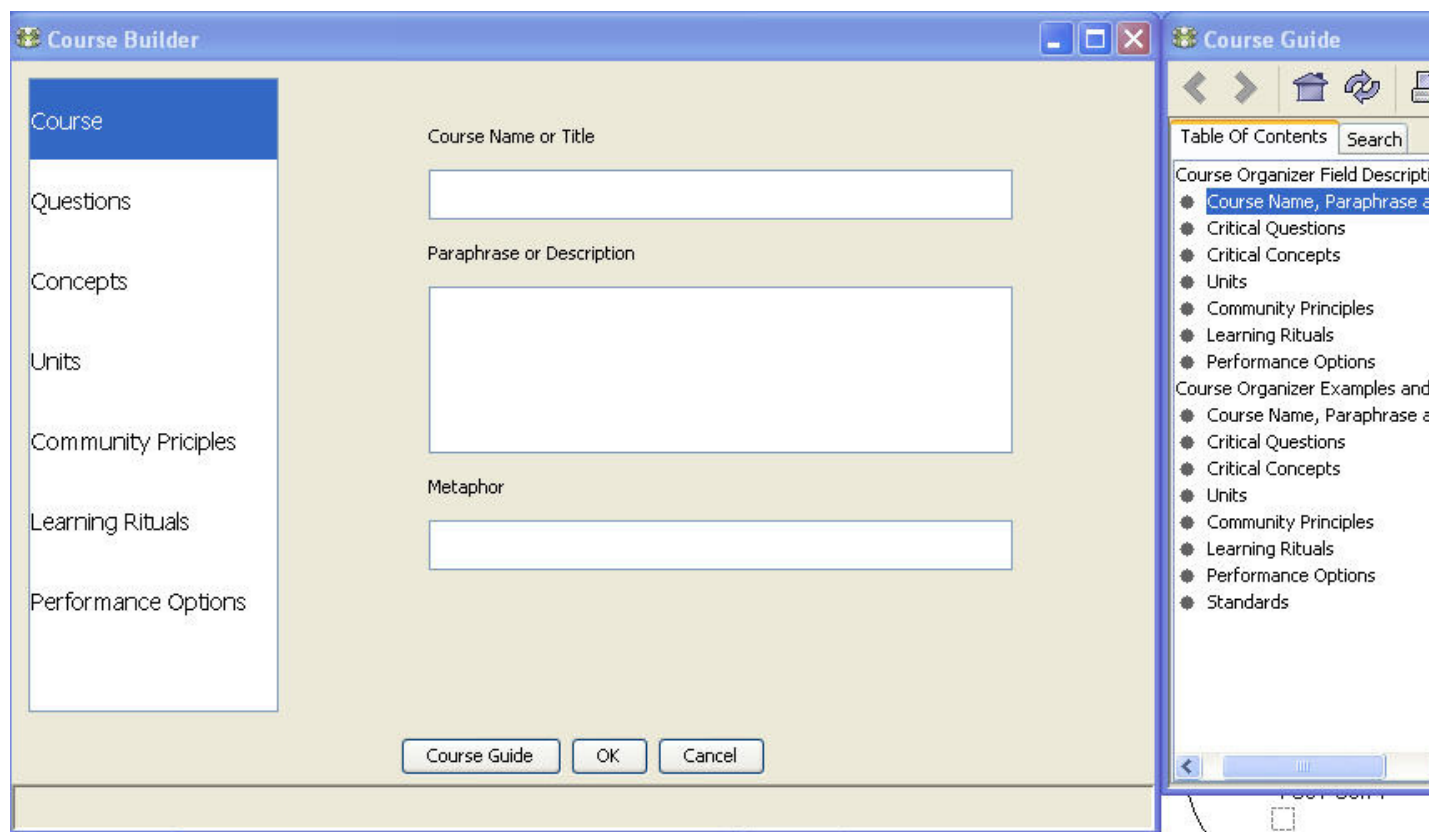
Starting and Using the Course Builder

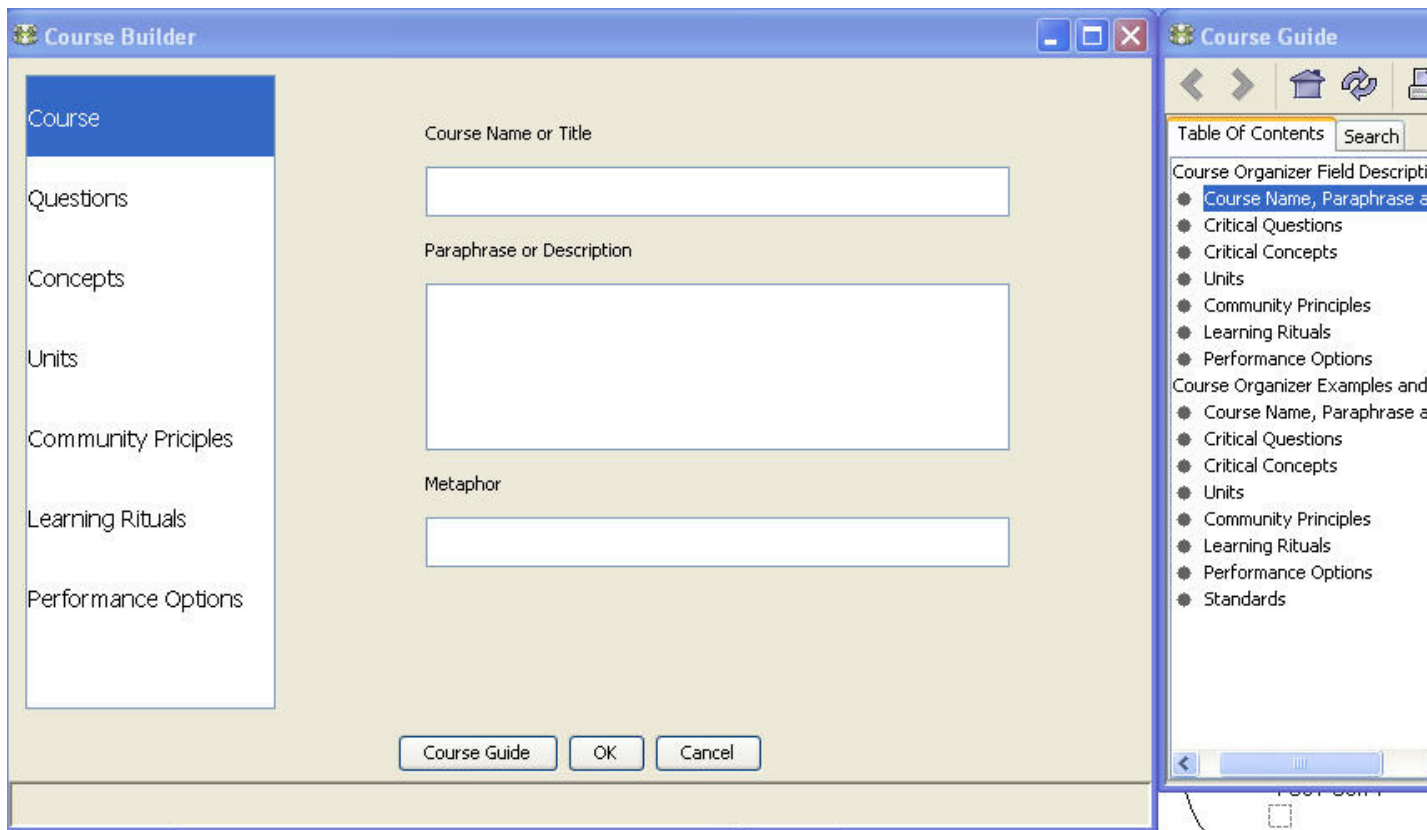
To access the GIST Course Builder go to the File drop down menu (top left) and select Course Builder option. This will open up the Course Builder menu.



Course Builder Menu

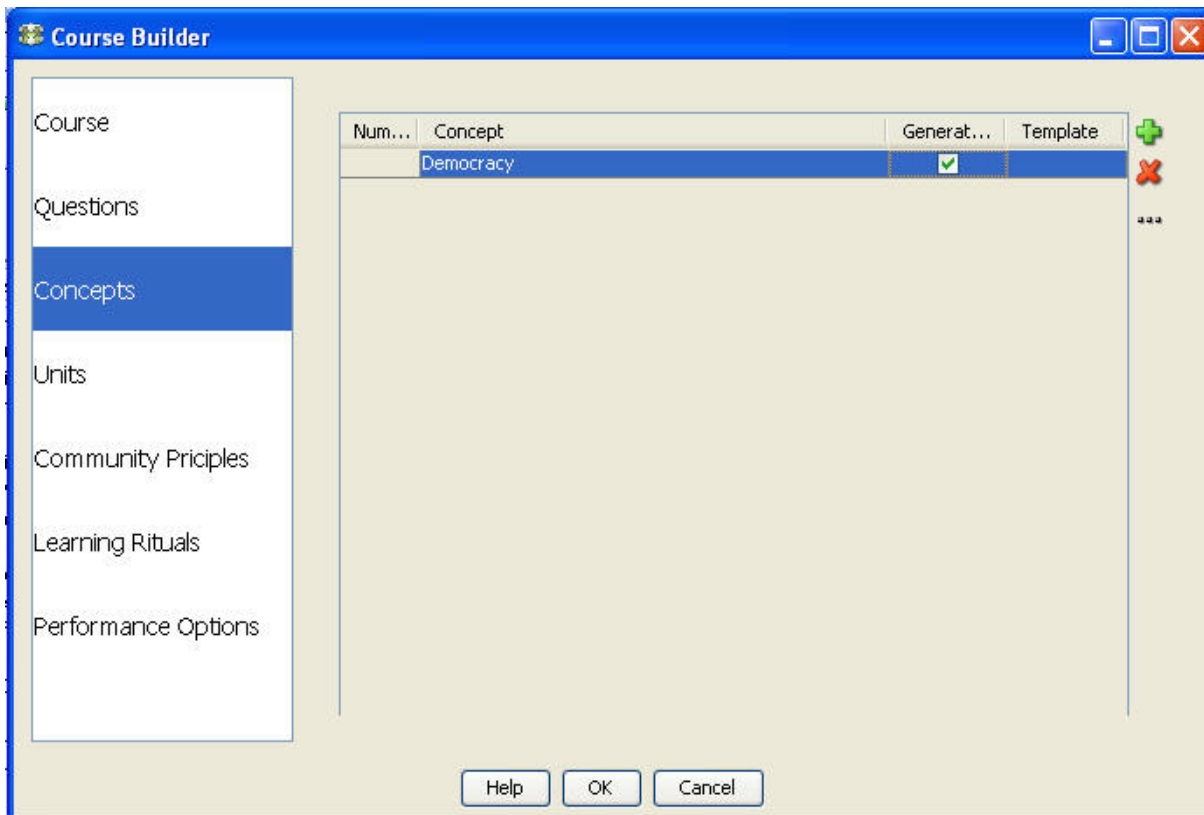
The Course Builder Menu will appear with seven Course Organizer Sections(left panel) along with section steps and entry fields(middle section) that correspond to the Course Organizer Template. On the right side there are prompts and a short guide that gives further information on each section and step. Users can complete as many or as little of the sections and steps of the Course Builder as they prefer. When the user has completed the sections, steps and fields of the Course Builder Menu they will select 'OK' button to start the build.

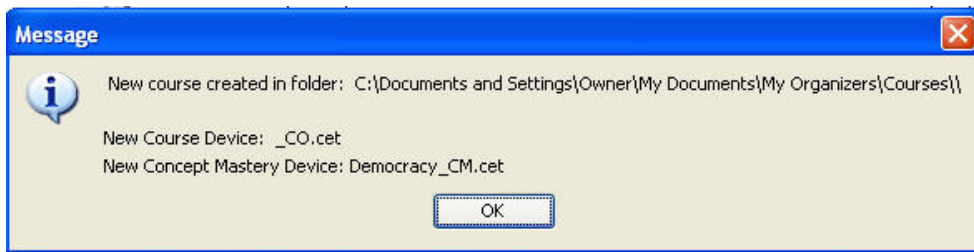




Generating Questions, Concepts and Unit Devices with Course Builder

Three of the Course Builder sections (Questions, Concepts and Units) allow users the option to generate and link from the Course Organizer Template to another device. For example, a user can enter the concept 'democracy' in the entry field and a Concept Mastery Template will be created, linked and populated (with 'democracy') in that Course folder. To add one of these devices users will select the check mark in the 'Generate' box of the Questions, Concepts or Units section and after the builder is complete a 'message' menu will appear showing the devices that were generated during the build process.





Created from Course Builder

After the Course Builder Menu is completed, a user will have at minimum a populated Course Organizer Routine Template and a Course Folder(.cec file) along with a populated Course Tab. In addition, a user could have multiple devices in their Portfolio Section and Course Tab that link from the Course Organizer Template to the new devices. The Course Tab could have, depending on what the user entered in the Course Builder Menu, multiple fields from the different sections of the Course Organizer Routine such as Critical Questions (Example below - What major events lead to the formation of the US?)

Note: All courses created from Course Builder Menu are automatically placed into the new 'Courses' folder located in the My Organizers or Organizer folder

The screenshot shows the 'United States History 1600s - 1880 - GIST' application window. The interface includes a menu bar (File, Edit, View, Tools, Window, Help), a toolbar with icons for Edit, Back, Forward, New, Open, Print, Layers, Library, and Zoom, and a main workspace. Annotations with arrows point to various parts of the interface:

- Courses Folder:** Points to the 'Courses' folder in the left-hand 'Portfolio' tree view.
- Generated Course Folder and Files via Course Builder:** Points to the newly created folder 'United States History 1600s - 1880' and its sub-items: 'Democracy_CM', 'Revolutionary War_UO', 'United States History 1600s - 1880', 'United States History 1600s - 1880_CO', and 'What major events lead to the formation of our the US_QEG'.
- Course Tab:** Points to the 'Course: United States History 1600s - 1880' tab at the bottom left, which displays a tree view of course content including 'Critical Questions', 'Critical Concepts', 'Units', 'Revolutionary War', 'Lessons', and 'Other Resources'.
- Populated Course Organizer via Course Builder:** Points to the main workspace area titled 'The Course Organizer', which contains fields for 'Teacher(s)', 'Time', 'Student', and 'Course Dates', and sections for 'THIS COURSE: United States History 1600s - 1880' (with a sub-section 'is about US History from formation to post-civil war'), 'COURSE STANDARDS:' (with columns for 'What?', 'How?', and 'Value?'), 'COURSE QUESTIONS:' (with a question: '1. What major events lead to the formation of our the US?'), and a 'COURSE PROGRESS GRAPH' grid.

Course Folder and Devices Created from Course Builder

The Course folder, which is located in the My Organizers folder, is the location that all courses, files and devices generated from the Course Builder are placed in GIST (C:\Documents and Settings\youraccount\My Documents\My Organizers\Courses). In addition to the GIST/.cet devices that are created the Course Builder also creates a .cec file (pink). The .cec file (Content Enhancement Course) contains the connecting information between devices and the Course Tab.

Note: the example of the Course titled 'United States History 1600s to 1880' has multiple devices including abbreviations of devices which include CO - Course Organizer, UO- Unit Organizer, CM - Concept Mastery and Question Exploration Guide - QEG.

