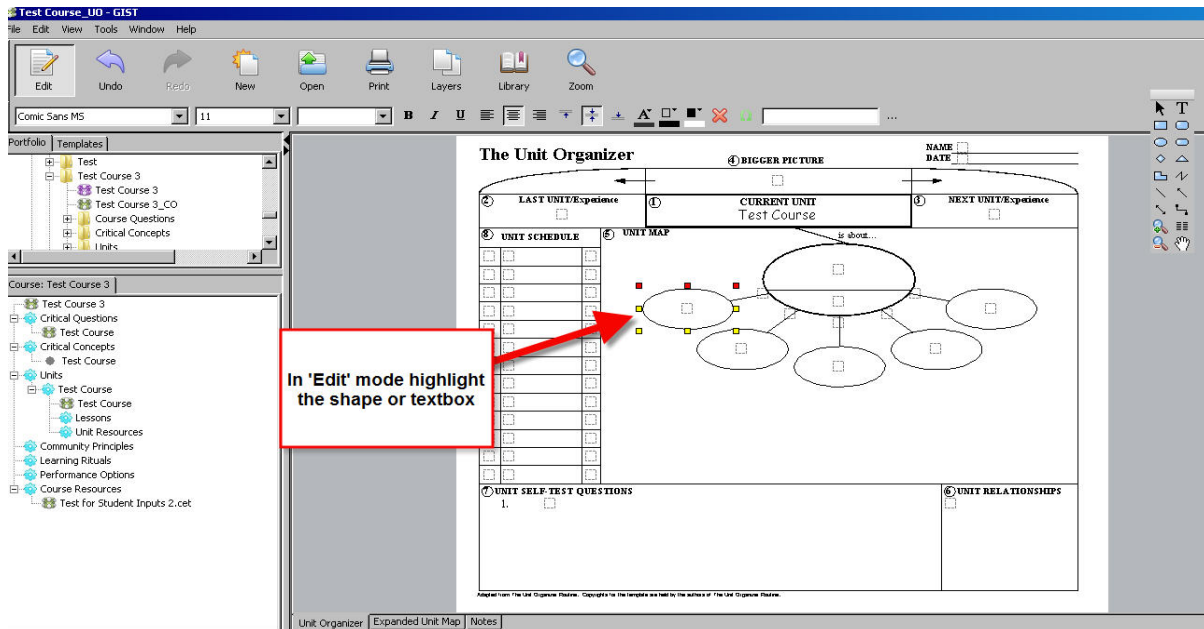
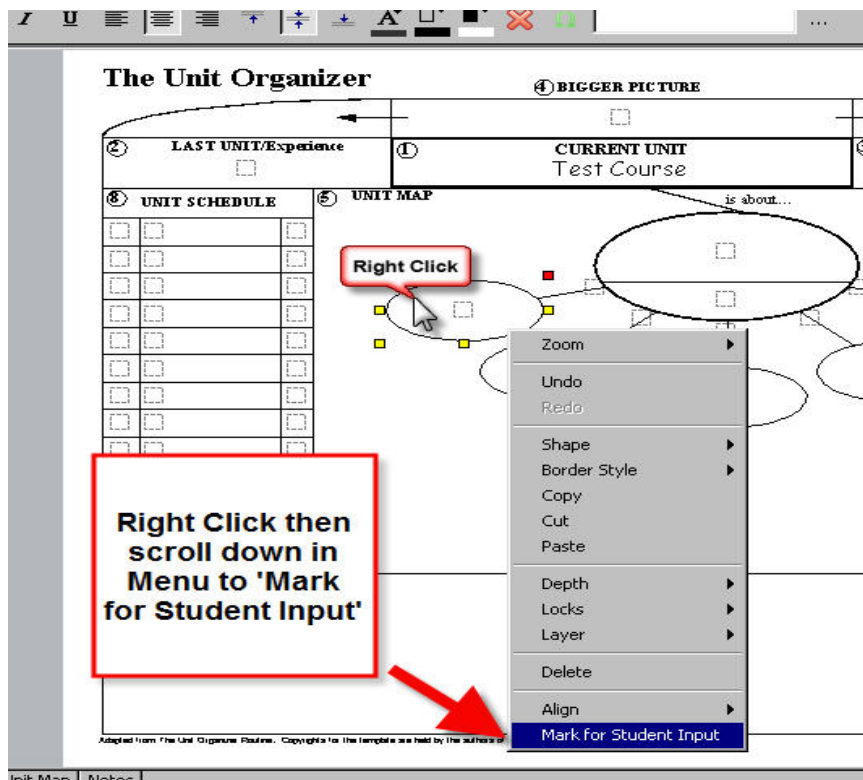


# Creating Student Inputs in GIST software

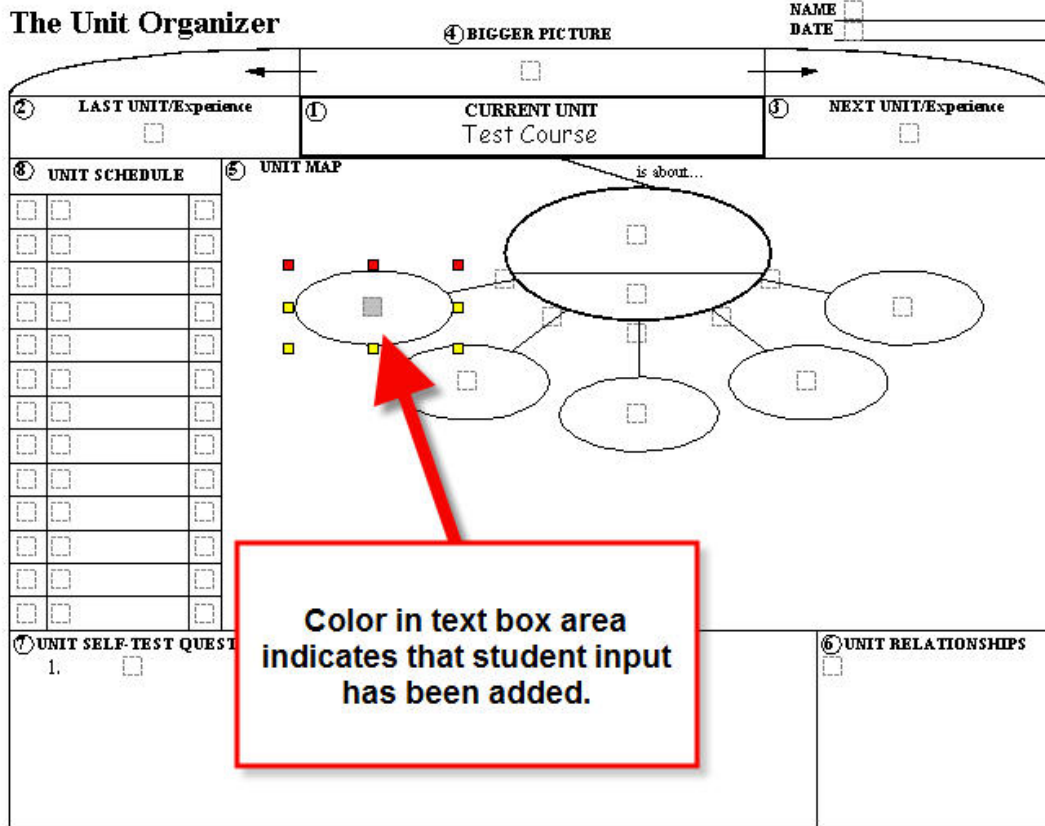
1. Teachers can indicate text fields in GIST which allows students to take notes, co-create, provide feedback and answer questions in GIST Mobile. To create student input fields in GIST Mobile, first, teachers need to select a shape or text box so that it is highlighted.



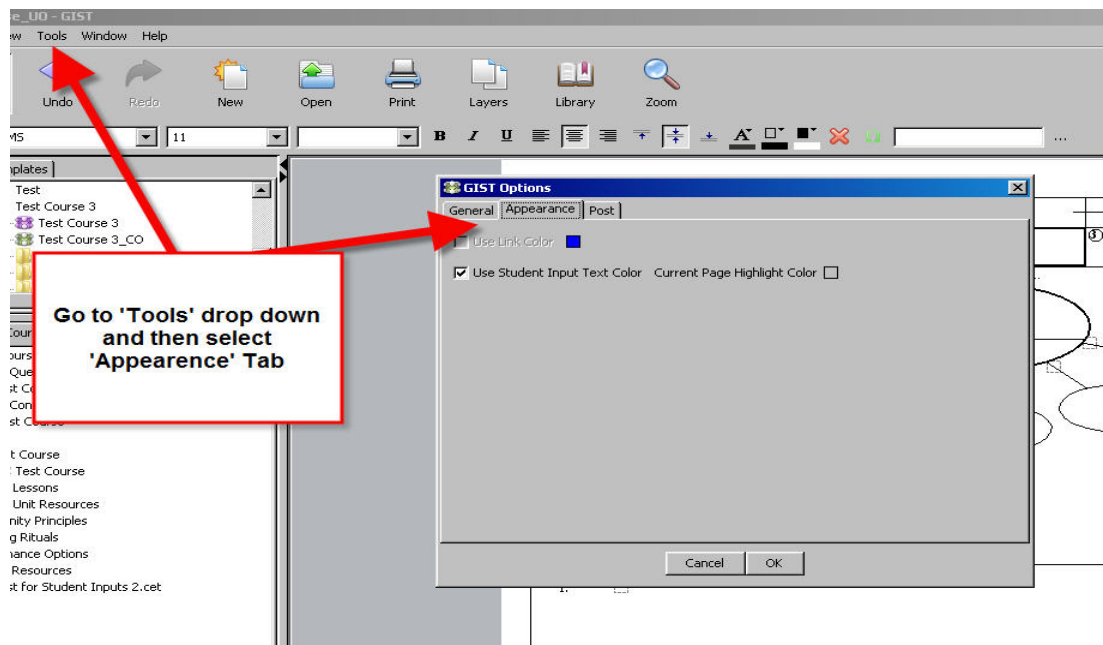
2. Next, right click(ctrl click MAC) on the highlighted shape so that the drop down menu appears. Scroll down to the bottom and select 'Mark for Student Input' field.



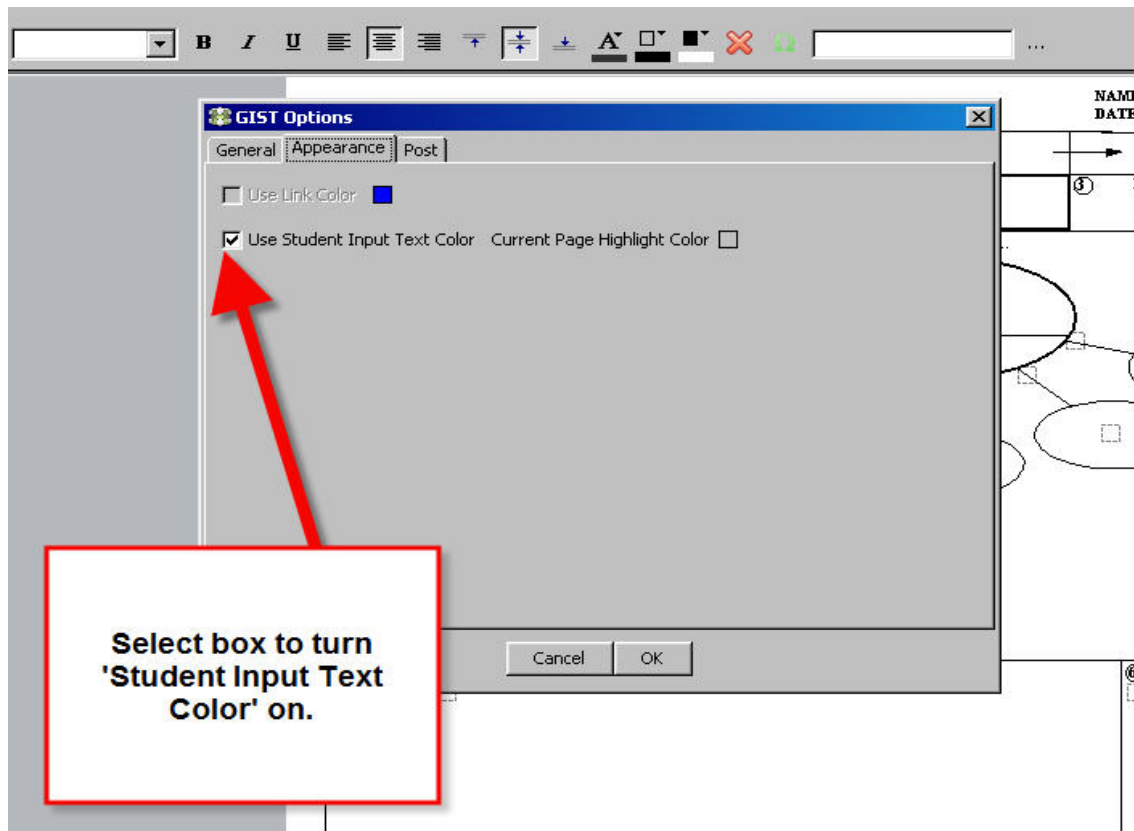
3. The 'Mark' for Student Input field is now marked inside the text square. The default color for a marked field is Grey.



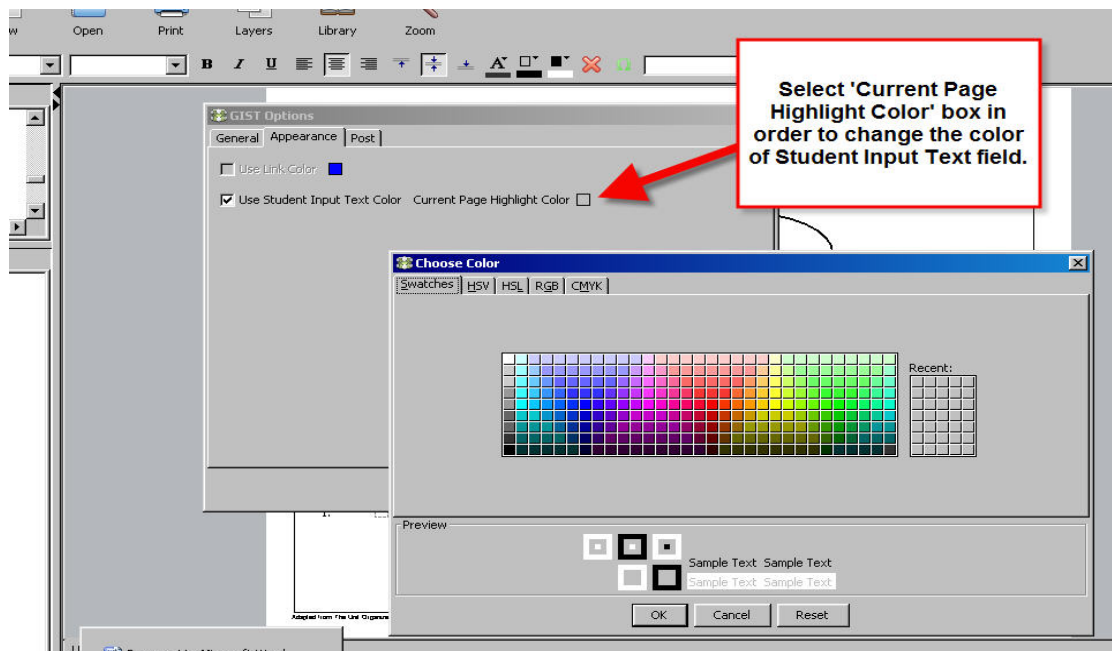
4. To change the color of the input field or to turn color on, go to the 'Tools' drop down menu and open the GIST Options menu. Then go to the 'Appearance' Tab and select the box labeled 'Use Student Input Text Color'.



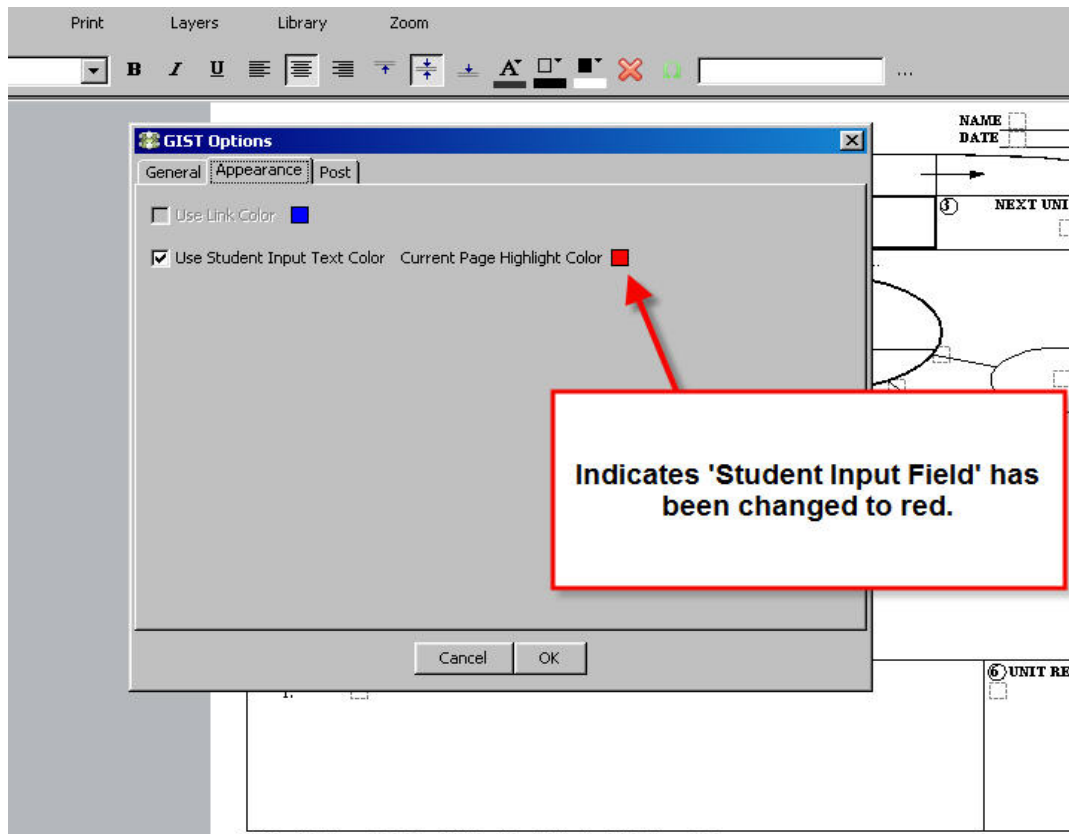
5. Selecting the box will turn color on and off in Student Input Fields.



6. Select the 'Current Page Highlight Color' box to change the color of student input field when it has been indicated. The default color of this field is grey.



7. The new selected color will shown in menu.



8. The new color of the 'Student Input Field' will be reflected in the shape or text box in which it was indicated by the user.

